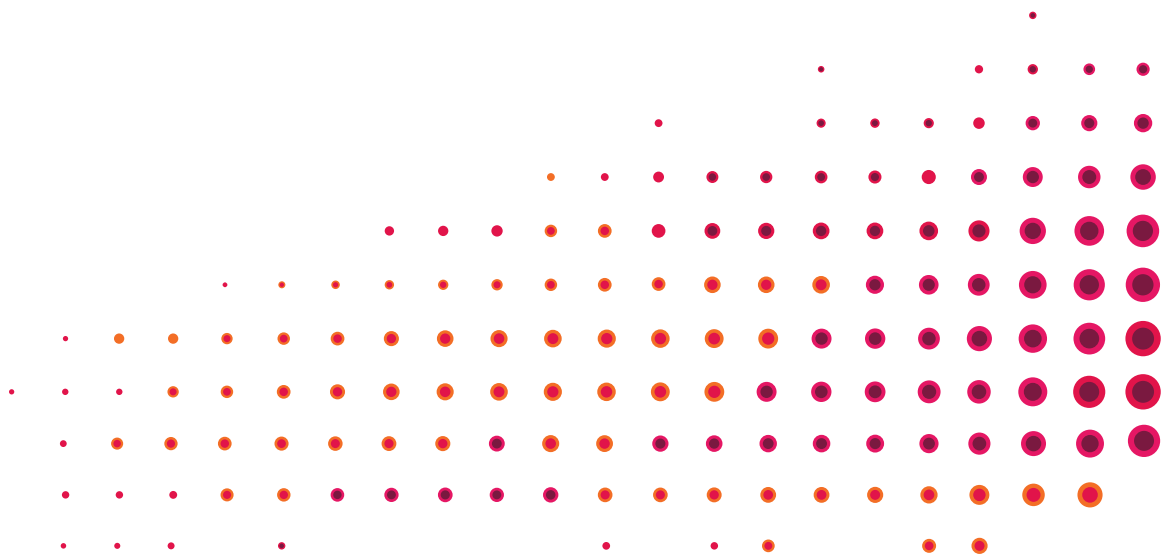


## New User Activation Guide

### Teachscape Effectiveness Platform

August 2013



## Frequently Asked Questions

### 1. What Browsers and Operating Systems should I use?

For PC, we recommend that you use Google Chrome 18 (or above), Mozilla Firefox 10 (or above), or Internet Explorer 8 (or above) on Windows XP SP2 or newer operating system.

For Mac, we recommend that you use Safari 5 (or above), Mozilla Firefox 10 (or above), or Google Chrome 18 (or above) on OSX 10.3 or newer operating system.

### 2. How do I activate my account?

1. Please go to <http://login.teachscape.com> and click the *Activate Account* link to complete the registration process.



Username

Password

☐ Remember me

[Forgot password?](#)

Login

[Activate account](#)

1

2. Enter the email address provided for you by your district or educational institution and click on Submit in order to receive a new registration email.



### Activate Your Account

Please enter your email address, and we will email instructions for activating your account.

Email



Submit

Please note that if you do not have an account in the system, you will see the following error message.



no person found with email sample@gmail.com x

### Activate Your Account

Please enter your email address, and we will email instructions for activating your account.

Email

Submit

### 3. What does Teachscape registration email look like?

You will receive an email from Teachscape, Inc. ([donotreply@teachscape.com](mailto:donotreply@teachscape.com)) with the following content. Please click on the link in your email to complete your registration.

Dear Sample User:

Thank you for choosing Teachscape.

To complete your registration by clicking the following link to activate your account.

<http://sso.teachscape.com/web/activate?token=00a7187f-29b0-4b41-81ef-835935cc0e81&email=sample.user@gmail.com>

If you need further assistance, please contact us at [support@teachscape.com](mailto:support@teachscape.com) or call 1-888-479-7600.

Sincerely,

The Teachscape Team

Great teachers create inspired learners.

Connect with us: [www.teachscape.com](http://www.teachscape.com)

This email message and included links are for the sole use of the intended recipient. Any unauthorized review, use, disclosure or distribution is prohibited.

© Teachscape Inc. 71 Stevenson St, 5th Floor, San Francisco, CA 94105

Once you click on the link in your email, you will be taken to the registration page to complete the registration process.

### 4. What does the registration page look like?

You will be asked to complete the registration process on this screen. Please set your password and check the box to accept the terms and conditions. On clicking the *Register* button, you will be registered to use Teachscape.



Please complete your registration.

Password

Confirm password

☐ I have read and agreed to the terms of use. [View terms of use.](#)

Register

1

2

1. Please check the box to accept the Terms and Conditions
2. Please click the *Register* button to complete the registration process.

## 5. What happens after I complete the registration?

You should receive another email from Teachscape, Inc. (donotreply@teachscape.com) with the following content. This email will have information about the link to the platform as well as your login credentials. Please save this email for future reference.

Dear Sample User:

Congratulations. You are now registered to use Teachscape.

Click here to log into the Teachscape platform.

<http://login.teachscape.com>

Your username is: [sample.user@gmail.com](mailto:sample.user@gmail.com)

If you need further assistance, please contact us at [support@teachscape.com](mailto:support@teachscape.com) or call 1-888-479-7600.

Please save this email for future reference.

Sincerely,

The Teachscape Team

Great teachers create inspired learners.

Connect with us: [www.teachscape.com](http://www.teachscape.com)

This email message and included links are for the sole use of the intended recipient. Any unauthorized review, use, disclosure or distribution is prohibited.

© Teachscape Inc. 71 Stevenson St, 5th Floor, San Francisco, CA 94105

## 6. What if I forget my password?

If you forgot your password, please go to <http://login.teachscape.com> and click on the *Forgot Password* link.



Username

Password

☐ Remember me

[Forgot password?](#)

1

Login

[Activate account](#)





## Forgot your Password?

No problem. We will look up your account using your email address.

Your Email



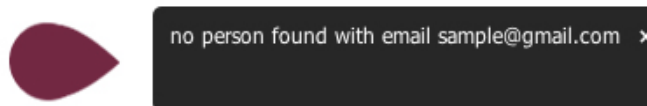
We will email you instructions on how to reset your password.

Submit



If you no longer have access to your email address, call Teachscape support at 1-888-479-7600.

Please note that if you do not have an account in the system, you will see the following error message.



Please contact Teachscape Support at 1-888-479-7600 or email us at [support@teachscape.com](mailto:support@teachscape.com) if you encounter any problems.